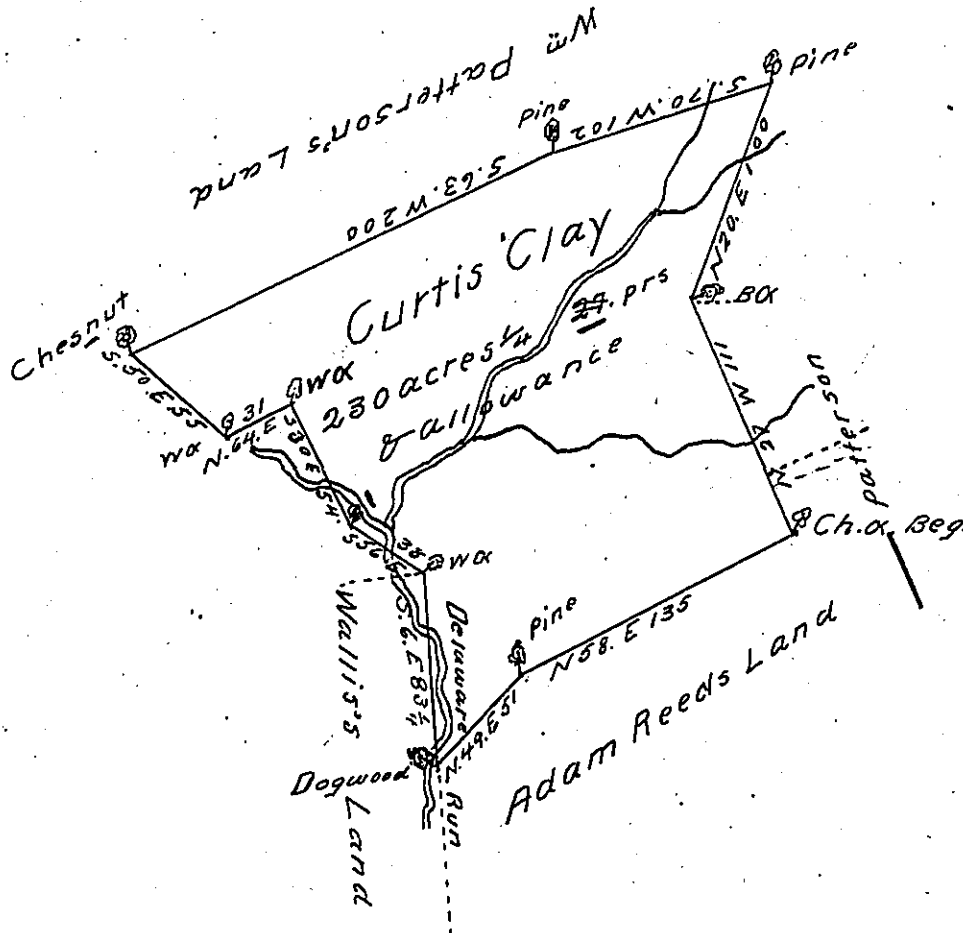


Courses & Dist^s

N 27 W 111
 N 20 E 100
 S 70 W 102
 S 63 W 200
 S 50 E 55
 N 64 E 31
 S 30 E 54
 S 56 E 38
 S 6 E 83 1/2
 N 49 E 51
 N 58 E 135



A Draught of a tract of land Situate on the Waters of Delaware Run in Fermanaugh Township Cumberland County Containing two Hundred & thirty acres & twenty seven Perches & the Usual allowance of Six p^r Cent for Roads &c^a Surveyed the 3^d of August 1784. In Pursuance of a Warrant from his Excellency the President of the Supreme executive Council Dated the 2^d day of July 1784

p^r Jas. Harris D.S.

To John Lukens Esqr. Surv^r Genl

IN TESTIMONY that the above is a copy of the original remaining on file in the Department of Internal Affairs of Pennsylvania, made conformably to an Act of Assembly approved the 16th day of February, 1833, I have hereunto set my Hand and caused the Seal of said Department to be affixed at Harrisburg, this twenty second day of February 1904

James P. Brown
 Secretary of Internal Affairs.